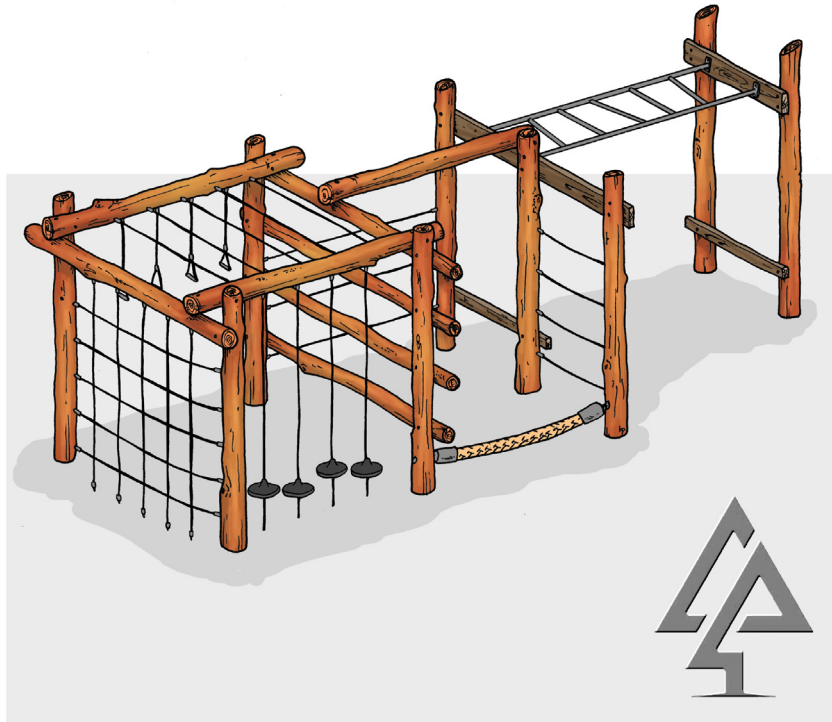




## PRODUCT INFORMATION SHEET



### MANIANA MONKEY CLIMBER

Product code: 431-MMC

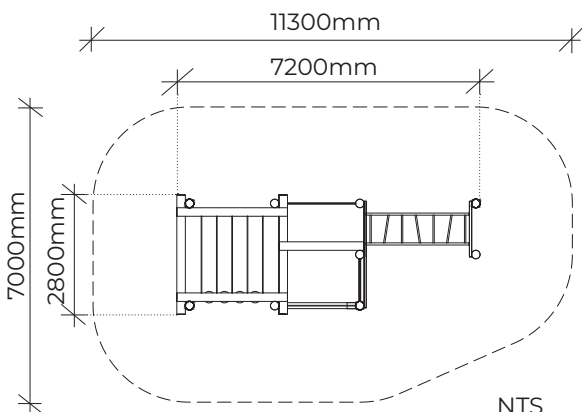
Category: Rope Features (400-Series)

Dimensions: W 2800mm x L 7200mm x H 2500mm

Fall zone: W 7000mm x L 11300mm

FHoF: 2500mm

Features: Monkey climbing grips, horizontal beam, monkey bars, tight ropes, log ladder, pommel challenge, coconut rope, vertical rope net and more!



Our timber products are primarily crafted from West Australian Jarrah hardwood, sustainably sourced where possible. Natural timber variations in character and dimensions should be expected.

All equipment and colour options can be customised to suit your playground requirements.

**VAN RYT**  
INDUSTRIES

[sales@vanrytind.com.au](mailto:sales@vanrytind.com.au)  
[www.vanrytind.com.au](http://www.vanrytind.com.au)